

**PHILIPS**

Professional  
Display Solutions

2017

The display wall features several panels:

- Top Right Panel:** Weather forecast for Friday, New York, June 23. Temperature: +22°C with a sun icon. Details include 5:12 AM, 10:05 AM, and 43% humidity. A secondary forecast shows: +18°C NIGHT, +20°C MORNING, +22°C DAY, +21°C EVENING.
- Top Left Panel:** Advertisement for sunglasses featuring a woman in a white jacket. Text: "sun glasses", "casual", "chique". Price: € 159,-.
- Bottom Left Panel:** Advertisement for a classic leather jacket featuring a man in a brown jacket. Text: "classic", "leather", "jacket". Price: € 299,-.
- Bottom Right Panel:** Advertisement for a blue dress and pink bag featuring a woman. Text: "bag", "€ 99,-".

Innovations on Display:  
**technology evolves**





# Innovations on Display: **technology evolves**

Philips Professional Display Solutions opens a window of opportunity. We pioneered the video wall in 1984, then changed the way people watch TV with Ambilight. And now, our technology evolves with innovations on display for a wide variety of markets and commercial applications.

## Our innovative solutions will keep leveraging your business

From dynamic signage to informative content and entertainment, our display solutions bring you intuitive access to an ever-expanding array of applications. More and more of our Professional Display Solutions are powered by Android™, and the number keeps growing. And by using our CMND platform, you can control and update displays and content from a central location, saving both time and money.

## Our Professional Display Solutions are tailored to suit many markets

- Hospitality
- Healthcare
- Public venues
- Transportation
- Corporate
- Education
- Retail
- Food & Beverage



**Powered by Android™**  
inspired by interaction

As the world's most developed and widely used operating system (OS), Android is more than just an enabling technology; it's a gateway to interactive simplicity. Our Professional Display Solutions powered by Android give you smarter, faster and more intuitive interaction with content and displays. And when integrated with our CMND platform, you get simplified installation and full control from a central location.

## Guest interaction, more visual appeal

You provide hospitality guests with a clean and intuitive user interface. It's also faster when it comes to guest interaction. And you have access to a wide range of Android Apps\* offering dedicated hospitality services.



## Partner interaction, control all screen aspects

You can use a native App or a web App\*\* to manage content schedules and play relevant signage messages, as well as manage and monitor the signage infrastructure. Developers can debug their App directly from the display.



## End-user interaction, maximum ease of use

Android System-on-Chip (SoC) provides stable and secure 24/7 operation. It also facilitates low cost integration for existing third-party signage solutions, and is easy to use.

\* The Android robot is reproduced or modified from work created and shared by Google and used according to terms described in the Creative Commons 3.0 Attribution License

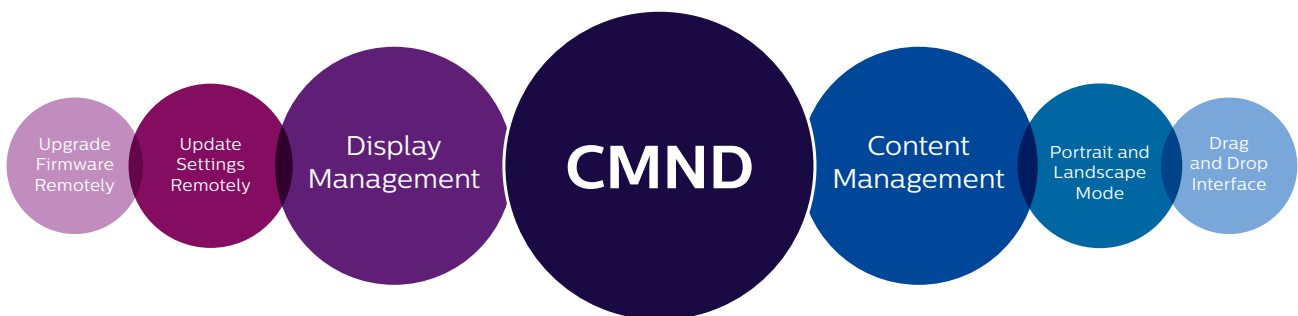
\*\* Separate APK Installation, Google Play store unavailable.





# Manage from a central location

Whether you have one display or a thousand, CMND lets you can manage the full suite from one central location. It's robust display management platform puts you in command of settings, scheduling firmware and software updates, and publishing and updating content. All with drag-and-drop ease.



\* Some features are not supported on all devices.



## A seamless, end-to-end display management platform

CMND is an end-to-end solution that works seamlessly across all your connected professional display solutions. You get total control over how content is displayed. On selected displays, it has full-HD resolution and shows content in both portrait and landscape mode.

## Reduce the total cost of ownership

Using just one interface to control all your displays means no time-consuming manual display-to-display updates are required. And the easy, intuitive way it lets you create and publish content in real time boosts the efficiency of your display management processes. The net result is a lower total cost of ownership.

## Display management with CMND&Control

CMND&Control updates and controls settings, software and content for all your displays from one central location. Updates can be scheduled or implemented in real time. This module also manages RF and IPTV channels via RF coaxial and IP networks.

## Content management with CMND&Create

CMND&Create gives you central control over what, how and when content is displayed. You can create interactive content using predesigned templates supplied with the module. It lets you create content in either portrait and landscape mode using an intuitive user interface, and features drag-and-drop widgets, video and image playback, and scheduling for content publication. This module also adds RSS feeds, weather, ads and other automatically updating elements.

# Hospitality

Whether you want to welcome guests as they arrive, entertain them in their rooms, show them the way or provide extra conferencing facilities, our suite of Professional Displays will enhance the quality of a stay in your establishment.

## Wow guests with in-room entertainment

MediaSuite and Signature displays provide future-proof access to a world of Android Apps, including dedicated hospitality services. They're HEVC compatible and can receive TV broadcasts via an IP network, eliminating the need for a set-top box. Guests will appreciate the intuitive user interface and be totally wowed by the 4K Ultra-HD resolution, Wifi Miracast™ for screen sharing and Ambilight to create a perfect ambiance. Use CMND&Control to centralize updating and controlling the displays, while CMND&Create centralizes content creation and management. (see pages 6-7 and 29)

## Finding the way with a digital concierge

Multi-Touch T-Line displays provide guests with easy access to useful information like route maps, recreational possibilities and meeting schedules. The displays have multiple simultaneous touch points and open up the world of Android Apps. And safety is not an issue with the T-Line either, thanks to anti-reflective, anti-glare security glass. (see page 27)

## Reliable videoconferencing in meeting rooms

Videoconferencing using the displays with failover functionality ensures content stays up and running. With QuadViewer you can simultaneously play content from four separate Full-HD inputs or play content in 4K Ultra-HD quality. Access to multiple meeting rooms is easily managed using a 10-inch T-Line display at the entry door showing the room name, meeting topic, organizer and occupancy using colored LED bars. (see page 27)

## An inviting lobby encourages a longer stay

An impressive lobby will entice guests to stay longer. A great way to make this happen is the X-Line video wall display with ultra-narrow bezel, advanced color calibration and embedded processing power. (see page 26)







# Healthcare

Our solutions not only contribute to the wellbeing of patients, they also help visitors to healthcare locations find their way around and provide doctors' practices with informative and calibrated Professional Displays.

## Making patients' lives comfortable with bedside entertainment

To meet the special needs of hospitals and other healthcare locations, we have dedicated Heartline displays that are compatible with Nurse Call systems. The 19" Bedside TV also features JISZ2801 anti-microbial housing to prevent the growth of micro-organisms. It also has a galvanic isolation headphone connection for fail-safe separation of the headphone connector and electrical environment near the patient's bed. Intelligent touch control keys on the IEC 60601-1 compliant remote control create a flat surface and feature a keypad lock for easy cleaning. Wall mounting the 19" Bedside TV is easy with the SW04500 arm mount solution, and IPTV Channels for receiving TV broadcast means there's no need for a set-top box. It also provides better picture quality and the ability to stream media in smaller batches, directly from the source.

(see page 30)

## Arrange TV access with the MyChoice payment solution

With MyChoice you can generate additional revenue without changing your existing infrastructure. The TV channels will be activated with a PIN code. Patients can buy these PIN codes at the hospital payment terminal or reception desk.

## Help visitors find the way

Help your visitors and patients find the way by providing maps of the premises on our T-line displays with multiple simultaneous touch points. The displays have multiple simultaneous touch points and open up the world of Android Apps. And safety is not an issue with the T-Line either, thanks to anti-reflective, anti-glare security glass. (see page 27)

## Review and diagnose in doctor's offices

Doctors often need to review and diagnose clinical images with consistent and accurate display performance. Our signage solutions are factory calibrated to give DICOM part 14 compatible Grayscale standard display performance. (see pages 24-27)



# Public venues

Wherever large numbers of people are constantly coming and going, there's a need to entertain and inform them. Our Professional Displays do this effectively while providing you with opportunities to generate additional advertising revenue.

## The easy choice with digital menu boards

You can schedule how, when and what content is displayed in portrait or landscape mode thanks to centralized content creation and management with CMND&Create. View our displays from almost any angle thanks to their extra wide viewing angle of 178 degrees. Even in remote or complex locations, signage networks can easily be created using machine-to-machine communication with the 4G/LTE network option. The Android powered D-line and P-Line also offer affordable and easy integration possibilities with third party signage solutions, and a stable and secure 24/7 operation. [\(see pages 24-25\)](#)

## Generate extra revenue with advertising and promotion

Advertising and promotion displayed on our ultra-narrow bezel, high brightness X-Line video wall is a great way to grab attention and generate revenue. Your visitors enjoy remarkably crisp images and vivid colors thanks to the color accuracy and consistent brightness of our IPS displays. And the failover functionality available on most of our signage solutions ensures content runs 24/7 by automatically playing content from another input if the main media player fails. [\(see page 26\)](#)

## A welcoming desk with news and information

Impress and inform your visitors with a Signature display with Ambilight placed above your welcome desk. It's perfect for showing the latest news and informing people about your company. [\(see page 29\)](#)

## Live broadcasts to entertain visitors

MediaSuite and Signature, powered by Android provide a future-proof way to entertain visitors with live broadcasts. They're HEVC compatible and can receive TV broadcast via an IP network, thus eliminating the need for a set-top box. [\(see page 29\)](#)

## Help visitors find the way

Multi-Touch T-Line displays provide guests with easy access to useful information like route maps, recreational possibilities and meeting schedules. The displays open up the world of Android Apps, and safety is not an issue thanks to their anti-reflective, anti-glare security glass. [\(see page 27\)](#)

The digital display is divided into three main sections. The top-left section shows a soccer match in progress, with a player in a maroon jersey (number 10) about to kick the ball. The top-right section is an advertisement for hamburgers, featuring the text "TRY OUR HOMESTYLE HAMBURGERS" and "THE BEST IN TOWN" above a large, detailed image of a burger. The bottom section is a soccer score overlay with a blue background, showing the home and guest team names, a score of 00-00, and a 45:00 timer.

TRY OUR  
HOMESTYLE  
HAMBURGERS

THE BEST  
IN TOWN

HOME 00 - 00 GUEST

45:00





## Departures (2/4)

Vienna	11:01 AM	On time
Abu Dabi	11:08 AM	On time
London	11:11 AM	Cancelled
Venice	11:22 AM	On time
Rome	11:40 AM	Cancelled
Berlin	11:49 AM	On time

MONDAY  
April 27 10:57 AM

PARIS  
26°C  
Partly Cloudy

8:22 AM 1:22 AM 8:26 PM  
7:50 AM 7:17 PM 7:17 PM

14-19 km/h  
View All

TUESDAY 27°  
WEDNESDAY 28°  
THURSDAY 30°  
FRIDAY 29°  
SATURDAY 25°  
SUNDAY 23°



**FLY**  
TO THE OTHER SIDE  
OF THE WORLD

**TERRIFIC AIRWAYS. TRAVEL IN STYLE.**



# Transportation

Professional Displays give travelers passing through airports, train stations and bus terminals fast access to information about departure and arrival times, and timetable changes. People also need to find their way around the location, and providing real-time information and entertainment in departure areas makes waiting more enjoyable.

## Be on time with information boards

Messages get noticed with the high brightness P-Line displays, powered by Android. Whether its arrival and departure times, sponsored advertisements and promotions or emergency messages, the CMND platform lets you control all information from a central location. The failover functionality available on most of our displays ensures content runs 24/7 by automatically playing content from another input if the main media player fails. Even in remote or complex locations, you can easily create signage networks using machine-to-machine communication with the 4G/LTE network option.

(see pages 6-7, 25)

## Make choosing easier with digital menu boards

Provide high-quality images of available refreshments in portrait or landscape mode. Travelers can view the Professional Displays from almost any angle thanks to extra wide viewing angles of 178 degrees in both horizontal and vertical planes. And the failover functionality available on most of our displays ensures content runs 24/7 by automatically playing content from another input if the main media player fails. The Android powered D-line and P-Line also offer affordable and easy integration possibilities with third party signage solutions, and a stable and secure 24/7 operation.

(see pages 24-25)

## Help travelers find the way

Help travelers get to their destinations by providing route maps and information about taxis, public transport, and recreational options in the area. Our T-line displays have multiple simultaneous touch points and open up the world of Android Apps, and safety is not an issue with the T-Line, thanks to their anti-reflective, anti-glare security glass.

(see page 27)

## Pass the time with entertaining broadcasts

Keep travelers entertained while waiting with the Signature display with Ambilight. It helps pass the time and keep passengers relaxed. HEVC compatibility and the ability to receive TV broadcast via an IP network are also available with the EasySuite and MediaSuite displays, making them good alternatives for a lower budget.

(see pages 28-29)

# Corporate

In the corporate world, Professional Displays are ideal for informing employees and visitors alike. Use them for presenting company news in reception, video conferencing in meeting rooms, video walls for dynamic interiors and for real-time production data on the factory floor.

## Impress visitors when they enter reception

Impress and inform your visitors with a Signature display with Ambilight placed above your reception. It's perfect for showing the latest news and informing people about your company.

(see page 29)

---

## Videoconferencing in meeting rooms

Videoconferencing using the displays with failover functionality ensures content stays up and running. With QuadViewer you can simultaneously play content from four separate Full-HD inputs or play content in 4K Ultra-HD quality. Access to multiple meeting rooms is easily managed using a T-Line display at the entry door showing the room name, meeting topic, organizer and occupancy using colored LED bars.

(see page 27)

## Seamless video wall in control rooms

Our state-of-the-art LED panels create a seamless video wall in your control room. Without glass in front of the display, the ambient light reflection is zero, ensuring a crisp and bright image, even in brightly illuminated spaces. These displays have a relative low power consumption, a long life expectancy and are very robust, making them the way to go for 24/7 operation.

(see page 27)

---

## Inform employees on the factory floor

A good way to motivate employees is by informing them about how well they're doing in real-time. You can do this using the internal network capabilities of the P-Line, powered by Android. The more employees know about manufacturing data and metrics, the more likely they are to meet established goals.

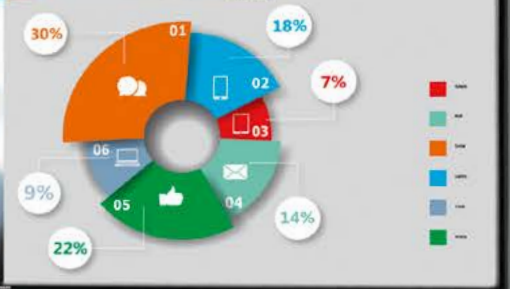
(see page 25)



APP 782.18	PWT 514.81	TRI 207.35	<b>INTC</b> 440.95	AW 132.37	ART 303.69	FMJ 432.00	HOO 42.81
LNK 326.28	JK 93.31	TUN 190.38	DNB 507.17	RO 415.85	MD 116.30	LOL 377.47	CC 281.15

**INTC 469.75**  
WEEK CHANGE: +5.10 (+7.52%)  
MONTHLY PERFORM: +21.84%

PREV. CLOSE: 423.90  
OPEN: 425.10  
TODAY: 435.00 - 473.56  
YEAR: 213.55 - 496.22





The image shows a classroom setting with a large interactive whiteboard. The whiteboard displays a math problem:  $\frac{3}{5} + \frac{9}{10} = \frac{3}{?}$ . The number 3 in the numerator of the result is circled in blue, and the question mark in the denominator is red. A teacher, a woman in a grey blazer and blue top, is pointing at the circled 3. The whiteboard has a toolbar at the top with icons for 'New file', 'Load file', 'Free draw', and text formatting options (B, I, U). There is also a color palette and a list icon. The brand name 'PHILIPS' is visible at the bottom of the whiteboard frame.



# Education

Students, teachers and visitors all need up-to-date information about where they need to be and how to get there. Professional Displays used as high-resolution whiteboards also add to the quality of education in colleges, schools and universities.

## Students and teachers can easily find their way

Provide your teachers and students with easy access to maps of the premises, information and recreational possibilities, class schedules and emergency messages on our multi-touch T-Line displays. And safety is not an issue with the T-Line either, thanks to anti-reflective, anti-glare security glass.

(see page 27)

---

## Impress visitors when they enter reception

Impress and inform your visitors with a Signature display with Ambilight placed above your reception. It's perfect for showing the latest news and informing people about your site, schedules and events.

(see page 29)

## High resolution interactive whiteboard

The true multi-touch T-line display turns into a high-resolution, interactive whiteboard with access to Android Apps. So instead of being limited to basic illustrations, you can show highly detailed images and run interactive videos and presentations without disturbing reflections and with low optical parallax. Simultaneously playing content from four separate Full-HD input is possible with QuadViewer in 4K Ultra-HD quality.

(see page 27)

---

## Monitor and display classroom availability

Access to multiple classrooms and lecture halls is easily managed using a T-Line display at the entry door showing the room name, teacher or lecturer and class subject. If a class is not to be disturbed, the T-Line shows this using colored LED bars on the side of the display.

(see page 27)



# Retail

Attracting customers to your retail location has become even more important in the face of on-line competition. Impressive in-store and shop window displays keep your visitors informed, and add an interactive dimension to shopping. And using our CMND platform, all your connected displays can be updated, and content can be created from one central location.





## Enticing and informative shop windows

Add an informative new dimension to your shop window and entice customers in to the store. Your window messaging can be viewed with excellent image quality at all times – even in bright daylight – with the UltraBright H-Line.

(see page 25)

---

## Impressive Video wall displays

Impress your customers with the X-Line video wall with ultra-narrow bezel, advanced color calibration, high brightness and embedded processing power or use our state-of-the-art long-lasting and robust LED panels (L-Line) create a seamless video wall with zero ambient light reflection.

(see page 27)

## Connected everywhere with in-store displays

Even in remote or complex locations, you can easily create signage networks using machine-to-machine communication with the 4G/LTE network option. The failover functionality available on most of our signage displays ensures content runs 24/7 by automatically playing content from another input if the main media player fails. As an added benefit, you can analyze your customer's interest by enabling real-time traffic measurement using the internal network capabilities of the D-Line, P-Line and T-Line (powered by Android).

(see pages 24-25, 27)

---

## More relaxed shopping with Kid's corner

Attract families into your store. A small kid's corner with basic Studio display will keep the kids busy at low cost while the parents can carry on shopping.

(see page 28)

# Food & Beverage

There's nothing more appetizing than high resolution images of today's specials to attract people into your establishment. Once they're in, you can show the full menu in glorious color. And entertaining the kids or showing sports events will keep them in even longer.

## The easy choice with digital menu boards

Make it possible to view high-quality and captivating images of your dishes, recipes, specials and promotions in portrait or landscape mode thanks to centralized content creation and management with CMND&Create. Guests can view the Professional Displays from almost any angle thanks to extra wide viewing angle of 178 degrees in both horizontal and vertical planes. And the failover functionality available on most of our Professional Displays ensures content runs 24/7 by automatically playing content from another input if the main media player fails. Affordable integration possibilities with third party signage solutions, stable and secure 24/7 operation, and ease of use with the Android powered D-line and P-Line.

(see pages 24-25)

## Attract customers with dynamic window displays

There's a great way to lure potential customers into your venue with high-quality images of your food and beverages. The UltraBright H-Line displays are visible even in bright daylight.

(see page 25)

## Captivate and entertain in the sports bar

Wow your guests with TV broadcasts in the sports bar. There's nothing else quite like our Signature display with Ambilight to keep your visitors captivated and entertained. You can control all professional displays from one location with CMND&Control. And with the MediaSuite and Signature displays powered by Android you have HEVC compatible solutions that can receive TV broadcast via an IP network, thus eliminating the need for a set-top box.

(see pages 6-7, 29)

## Bring families to kid's corner

Attract families into your venue. A small kid's corner with Studio display will keep the kids busy at low cost while the parents can enjoy their conversation.

(see page 28)



**SMOOTHIES**

Banana	3.95
Blueberry	4.10
Strawberry	4.10
Green	3.60
Mango	4.10
Orange	3.95
Veggie	4.10



**SANDWICHES**

Beef	5.10
Cheese	4.40
Chicken	4.30
Tuna	4.60
Avocado	4.90
Turkey	4.95
Salmon	5.20







# Q-line

## Brilliant, high-contrast images with optional Ambilight

Superb image quality in a cost-efficient package. You can connect and control content via the cloud, and save and play from internal memory.



- 65"
- 55"
- 48"
- 43"
- 32"

> Better Product Better Features

**CMND**

**SmartPlayer**

**Ambi light\***

**SmartPower**

**FailOver\*\***

**SmartBrowser**

**Clinical D-Image**

**MemoryCache**

\* Ambilight optional on 43", 48" and 55"

\*\* Failover available on 65"



# D-Line

## Low cost signage solution powered by Android

Ease of use, low cost integration and enhanced connectivity characterize this solution. FailOver ensures content stays up and running, and the optional 4G/LTE network feature allows operation in remote or complex locations.



- 65"
- 55"
- 49"
- 43"
- 32"

> Better Product Better Features

Powered by **Android**

**CMND**

**MemoryCache**

**FailOver**

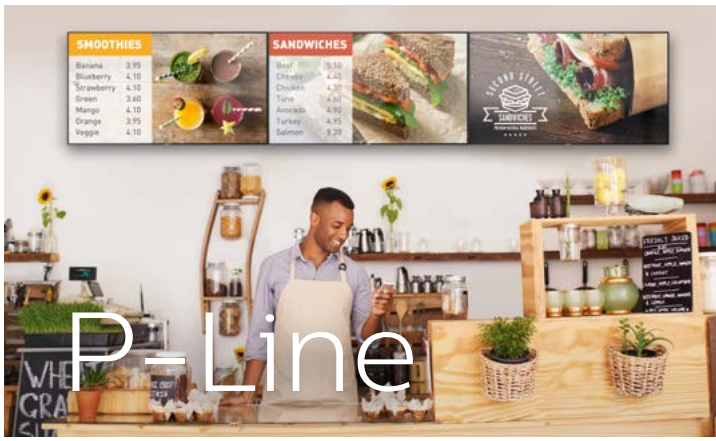
**SmartPower**

**WiFi**

**SmartBrowser**

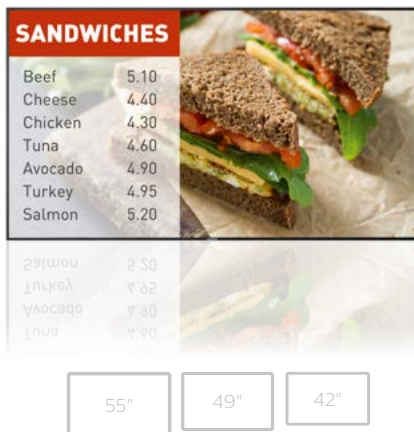
**Clinical D-Image**

**SmartPlayer**



## Public viewing with high brightness, vivid colors and powered by Android

The extra wide viewing angles make viewing comfortable in portrait and landscape modes. The slot for optional OPS-media player eliminates cables.



### > Better Product Better Features

Powered by **Android**

**CMND**

**FailOver**

**WiFi\*\***

**Memory Cache**

**OPSInsert**

**SmartInsert\***

**SmartPower**

**Clinical D-Image**

**High Bright**

\* SmartInsert not available on 42"

\*\* Optional WiFi available

## Delivering ultra-bright, crystal clear images

Crystal clear images even in locations with high ambient light, and a slot for optional OPS-media player and failover for content continuity.



### > Better Product Better Features

**Ultra Bright**

**CMND**

**FailOver**

**SmartPower**

**SmartInsert**

**OPSInsert**

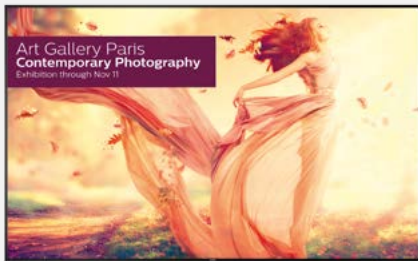
**Clinical D-Image**



# U-line

## The ultimate Ultra-HD display experience

With four times the resolution of Full-HD, this display with QuadViewer can play content from four different inputs. The slot for optional OPS-media player eliminates cables.



- 98"
- 84"
- 75"

### > Better Product Better Features

- 4K ULTRAHD**
- SmartInsert**
- QuadViewer**
- OPSInsert**
- FailOver**
- CMND & CONTROL**
- SmartPower**



# X-Line

## Create an impressive narrow bezel video wall

With the ability to scale to any size, Ultra-HD resolution, and a vast amount of connectivity options, our video wall displays are adaptable to any market.



- 55"
- 49"

### > Better Product Better Features

- UltraNarrow Bezel**
- FailOver**
- Advanced Colour Calibration**
- OPSInsert**
- SmartPower**
- CMND & CONTROL**





# L-Line

## High-brightness LED displays for stable broadcasts

Create a robust and seamless video wall that doesn't get washed out by bright ambient light. The ultra-high refresh rate means stable and complete images.



55"

### > Better Product Better Features

- ZeroBezel**
- EasyInstall**
- SmallPixelPitch**
- HighBright**
- TrueBlack**
- CMND & CONTROL**
- 24h/7days**
- SmartPower**
- UltraHighRefreshRate**



# T-Line

## Multi-Touch interactive displays with security glass

Display solution with anti-reflective, anti-glare glass can run interactive videos and presentations without disturbing reflections and with low optical parallax.



84" 75" 65" 55" 43" 10"

### > Better Product Better Features

- Plug & Play Multi-Touch**
- FailOver\*\*\***
- 4K ULTRAHD\***
- OPSInsert\*\*\*\***
- QuadViewer\***
- SmartInsert\*\*\*\***
- Powered by **Android\*\***
- MemoryCache**
- CMND\*\***
- SmartPower**

\* 75" and 84" only      \*\*\* Failover not available on 10"  
 \*\* 10", 43", 55" and 65" only      \*\*\*\* 65", 75" and 84" only



# Studio

Combine modern styling with ease of installation

Great value solution with a modern, a modern design and easy installation with USB Cloning. You get an easy menu, control locking and HEVC compatibility as well.



- 65"
- 49"
- 43"
- 32"
- 28"
- 24"
- 22"

> Better Product Better Features



**USB Cloning**

**Hotel Mode**



**Welcome Page**

**4K ULTRAHD\***



**Prison Mode**

**HEVC\*\***  
High Efficiency Video Coding

\* 65" only

\*\* HEVC compatibility with 2849 series



# EasySuite

High functionality with low cost of ownership

In combination with CMND, remote installation, maintenance and creation of interactive pages is established. MyChoice adds paid access to TV channels for extra revenue.



- 43"
- 40"
- 32"
- 24"

> Better Product Better Features



**CMND**



**Welcome Page**



**MyChoice**



**On-screen Clock**



**Serial Xpress Protocol**



**HEVC\***  
High Efficiency Video Coding

\* HEVC compatibility with 3011 series



# MediaSuite

Intelligent, stylish and future-proof Android experience

Access a world of Apps and services via its intuitive user interface. It has an integrated IPTV system, wireless control and HEVC compatibility.



- 55"
- 49"
- 43"
- 40"
- 32"
- 28"

> Better Product Better Features

- Powered by **Android**
- CMND**
- IntegratedSystem**
- Serial Xpress Protocol**
- IPTVChannels**
- AppControl**
- Wi-Fi Miracast™**
- HEVC** \*  
High Efficiency Video Coding

\* HEVC compatibility with 5011 series



# Signature

Fast and powerful 4K Ultra-HD painting on the wall

With the power of Android, information sharing via WiFi and Bluetooth, and an enhanced experience with Ambilight.



- 65"
- 55"
- 49"

> Better Product Better Features

- Powered by **Android**
- 4K ULTRAHD**
- ambi light**
- CMND**
- IntegratedSystem**
- Serial Xpress Protocol**
- IPTVChannels**
- AppControl**
- Wi-Fi Miracast™**
- HEVC**  
High Efficiency Video Coding





# Heartline

Amazing functionality for you and patients

Heartline lets you control all displays from one location. It's compatible with Nurse Call systems, and has anti-bacterial and multi-room remote control options.



40"    32"

> Better Product Better Features

- CMND**
- MultiRemote**
- MyChoice**
- USB**
- Serial Xpress Protocol**
- On-screenClock**
- Class II double isolation**
- HEVC** \*  
High Efficiency Video Coding



\* HEVC compatibility with 3011W series

Healthcare Remote included.



# Bedside TV

Guaranteed wellbeing of you and your patients

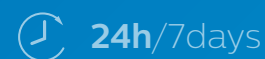
With its anti-microbial housing, isolated headphone connection, smooth easy-clean surfaces and keypad lock, Bedside TV is perfect near the patient's bed.



19"

> Better Product Better Features

- CMND**
- IPTVChannels**
- Serial Xpress Protocol**
- AppControl**
- GalvanicIsolation**
- USB**
- AntiMicrobial**
- On-screenClock**
- MultiRemote**
- MyChoice**





Philips and the Philips Shield Emblem are registered trademarks of Koninklijke Philips N.V.

[philips.com/professionaldisplaysolutions](https://philips.com/professionaldisplaysolutions)  
[signagesolutions.philips@mmd-p.com](mailto:signagesolutions.philips@mmd-p.com)